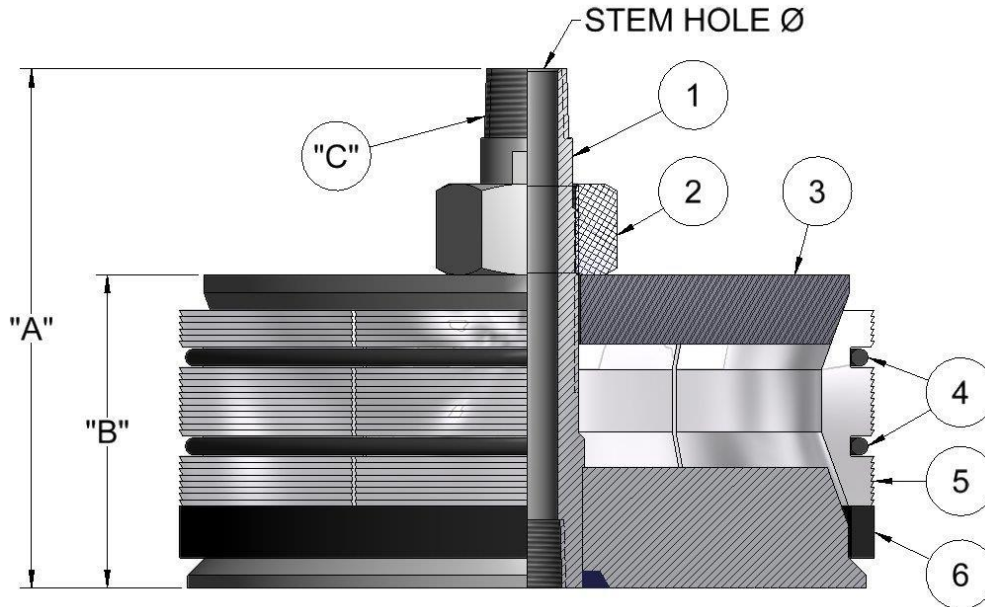




A DIVISION OF HY-TECH MACHINE, INC.

# TYPE "D" MEDIUM PIPE DATA SHEET

**PIPE I.D. SIZES**  
**2.900" – 11.938"**



## PARTS LIST

1. MANDREL    3. WASHER    5. GRIPS  
2. NUT        4. O-RING    6. SEAL CUP

STOPPER SIZE	THAXTON PART #	NOMINAL PIPE SIZE	"A" DIM.	"B" DIM.	"C" DIM. (MALE) N.P.T.	STEM HOLE Ø	NUT THREAD SIZE	SAFETY GAG PART #
2.900	D-2.900-0	3" SCH. 80	6"	3.39"	3/4-14	5/8"	1 1/4-12	SG-3
3.068	D-3.068-0	3" SCH. 40	6"	3.39"	3/4-14	5/8"	1 1/4-12	SG-3
3.826	D-3.826-0	4" SCH. 80	6"	3.39"	3/4-14	5/8"	1 1/4-12	SG-4
4.026	D-4.026-0	4" SCH. 40	6"	3.42"	3/4-14	5/8"	1 1/4-12	SG-4
4.813	D-4.813-0	5" SCH. 80	6-1/4"	3.67"	3/4-14	5/8"	1 1/4-12	SG-5
5.047	D-5.047-0	5" SCH. 40	6-1/4"	3.67"	3/4-14	5/8"	1 1/4-12	SG-5
5.761	D-5.761-0	6" SCH. 80	6-3/4"	3.92"	1 11-1/2	59/64"	1 1/2-12	SG-6
6.065	D-6.065-0	6" SCH. 40	6-3/4"	3.85"	1 11-1/2	59/64"	1 1/2-12	SG-6
7.625	D-7.625-0	8" SCH. 80	7"	4.19"	1 - 11-1/2	57/64"	1 1/2-12	SG-8
7.981	D-7.981-0	8" SCH. 40	7"	4.30"	1 - 11-1/2	57/64"	1 1/2-12	SG-8
9.564	D-9.564-0	10" SCH. 80	7-1/2"	4.50"	1 - 11-1/2	57/64"	1 1/2-12	SG-10
10.020	D-10.020-0	10" SCH. 40	7-1/2"	4.52"	1 - 11-1/2	57/64"	1 1/2-12	SG-10
11.376	D-11.376-0	12" SCH. 80	8-1/2"	4.23"	1 1/4 - 11 1/2	1"	2"-12	SG-12
11.938	D-11.938-0	12" SCH. 40	8-1/8"	4.17"	1 1/4 - 11 1/2	1"	2"-12	SG-12

THAXTON PIPE STOPPERS ARE FACTORY TESTED UP TO 3,000 PSI, DEPENDING ON SIZE

SPECIAL SIZES AND HIGHER PRESSURES CAN BE SUPPLIED PER CUSTOMER REQUIREMENTS