



Model

## **ATP-1BL**

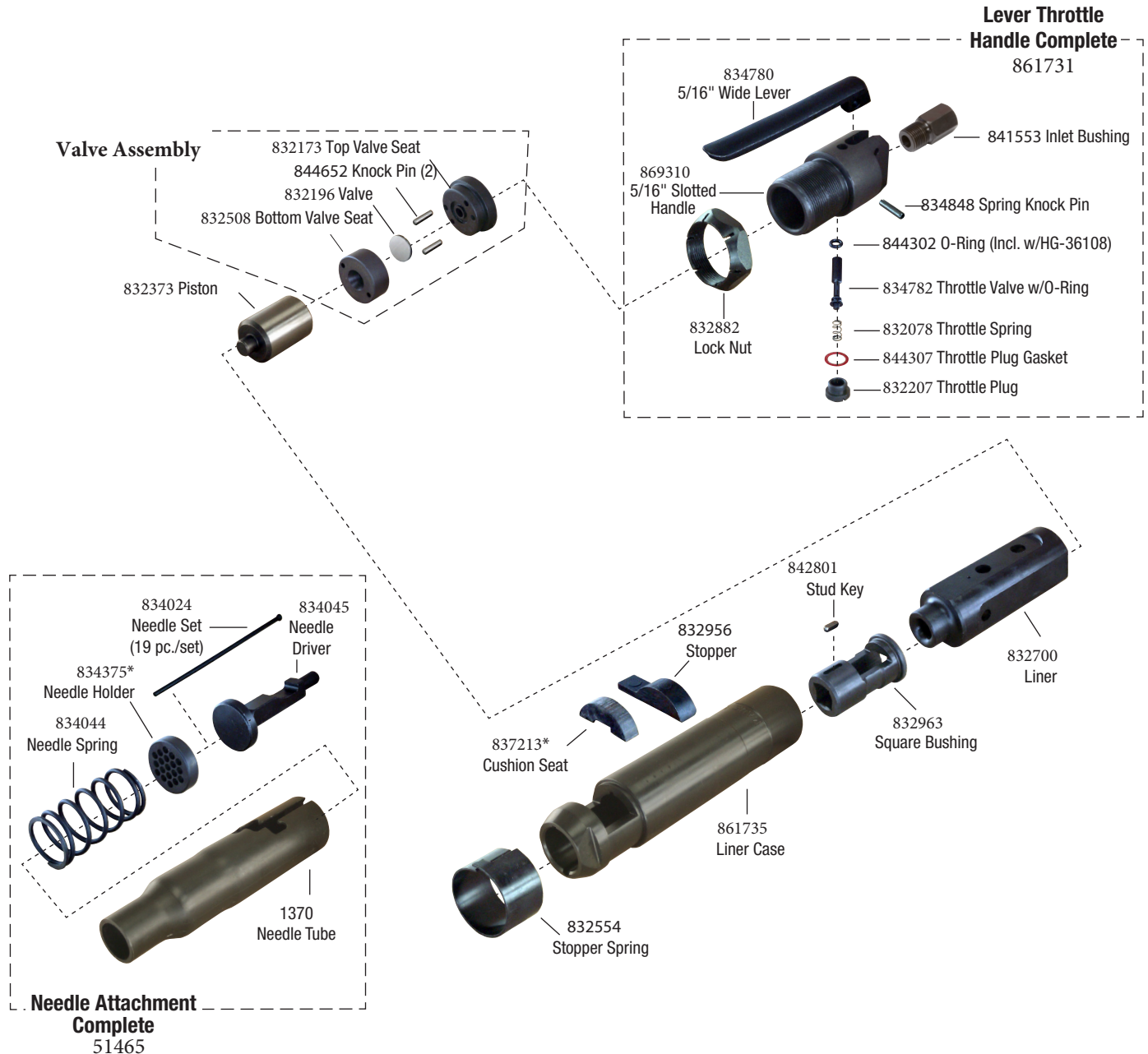
### **Lever Throttle Scaling Hammer**

Features smooth action throttling characteristics. Easy to handle, powerful tool widely used as a general purpose hammer for chipping stone, metal, concrete, brick and for carving wood. Chisels are held firmly in place and cannot rotate. Chisels easily changed with a quick release lever.

Stroke .....	1-1/8"
Bore.....	1"
Blows Per Minute.....	4600
Length.....	10-1/4"
Weight.....	3.625 lbs
Air Inlet Thread .....	1/4"
Rec'd Hose Size .....	3/8"
Avg. Air Consumption .....	12 cfm

# ATP-1BL Lever Throttle Scaling Hammer

## ATP-1BLNS Lever Throttle Needle Scaler



\* - Parts Not Interchangeable w/Cleco Model B1