

ATP

Air Tools Operation Manual

A208S

CE

Air Tools Operation Manual

1. The air pressure at the tool air inlet of Pneumatic Tools shall not exceed the maximum operating pressure 6.2bar-90psi.
2. The valve of air compressor shall be closed before being disconnected or disjointed, unless there is an automatic closing valve at the joint being separated.
3. A switching mechanism should be equipped at each tool station.
- 4 When tool is not being under used, air hoses and line should not connect to the tool and the air inlet shall be plugged.
5. Hose coupling shall be securely fitted to the tool and take off point. it is not allowed if an air hose and fitting are not exactly matched; Air Hose and fittings must be inspected regularly in case of damage or wear. Replace them when necessary.
6. Before the tool is connected to the air supply, check the throttle for proper operation (i.e., throttle moves freely and back to closed position.)
7. The operator shall be well instructed and illustrated the skills before managing air tools.
 - 7.1 Handle with care, paying careful attention to the weight of the tool.
 - 7.2 Keep hands and clothing away from the rotating parts of tools. In order to avoid any danger during operation, don't wear loose clothes or long hair , the long hair should be tied or covered by cap.
 - 7.3 Hold the tool correctly. Be alert to sudden changes during the operation of pneumatic Tools. Keep the balance and stability of physical position.
 - 7.4 The operator should wear protected goggles and earplugs; gloves, apron and helmet shall be used when necessary.
 - 7.5 Before repairing or changing the accessories, The air supply should be switched off, and the machine should be disconnected from the air supply
 - 7.6 Be nooticed that the tools are still running on for a while even after stopping operation. Do not put down the tool until the tool completely stops moving.
 - 7.7 Never use the air hose to support, raise or lower the tool. Fixed tool when working on elavated or high place.
 - 7.8 Air powered tools vibrate frequently under being working. The operation should be concentrated on working. Stop working while feel distracted or tired in case of any accicent.
8. While working processing on certain materials might cuase toxic dust, the operator should wear and use protective device.
9. Regularly check the anvil shank speed by tachometer at pressure 0.6Mpa, to ensure the speed is under its free speed range.
10. Make sure that tool is securely fixed If the tool is fasten uopn balancer or a similar device.
11. When air supply interrupted, check if the throttle trigger is back to stop position.
12. Be sure that the air scource is inflammable or inexplosive.
13. The air tool is NOT nonconductor.

1. Manual Instruction

- 1.1. Please review the manual instruction before operating the tool, make sure the security on working.
- 1.2. In order to protect air tools,we strongly suggest to install a Air Preparation Unit (Air filter, air regulator, air lubricator) on aircompressor.
- 1.3. Please notice if the over moisture, and daily exhuaust water from the air compressor.
- 1.4. Be sure to fill in spindle oil into the air inlet before using air tools.
- 1.5. Please keep proper air pressure while using air tool.
- 1.6. Do not apply too viscid oil to air inlet, otherwise it will reduce the air motor power.

2.Maintenance

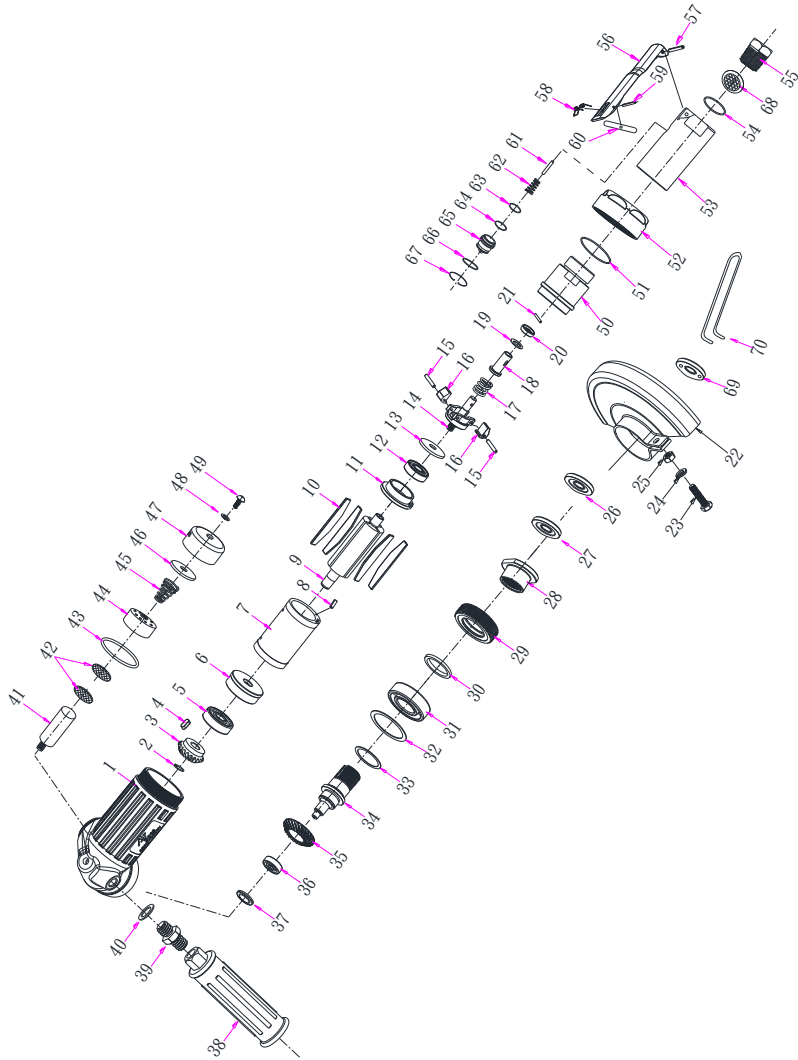
- 2.1. The air source supplying to the tool, that should have been processed, and ensure the air is clean and dried.
- 2.2. Please use the lubricator to lubricate tools, set influx volume to two drops per minute; if do not use the lubricator, it will need to pour three or fourth drops through the joint of air hose, by hand every day. Air Boss professional lubricant oil is recommended. After droping oil, remain the tool idling; while oil entirely lubricate tool, it will also remove some impurities along with exhusted oil .

3.Special Explanation

- 3.1. Within three months from the shipment date, if the tool can't move, air leaking, or the torque related issues. etc, which we authenticate that it is cuased by our side during manufacturing, Air Boss will be responsible to provide free maintenance. However, any of the following conditions is not covered under our responsibility, such as improper maintenance, incorrect operation without according to standard operation method, over supply from air compressor, overloaded working on tools or the other artificial damages...etc. the concrete conclusion is subject to our final confirmation after checking damaged parts.
- 3.2. Above maintenance policies are subject to change without prior notice.

**AIR ANGLE GRINDER
A208S**

Exploded View



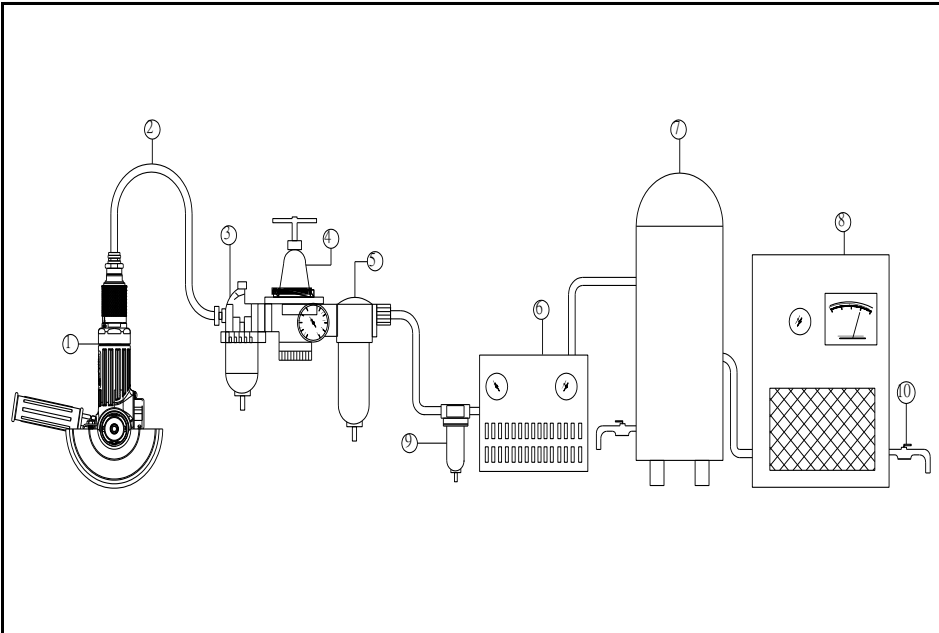
Parts List

NO.3

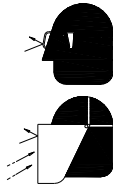

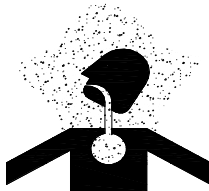

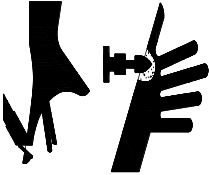
Index No.	Parts No.	Description	No. Req'd	Index No.	Parts No.	Description	No. Req'd
01	7040001	Housing	1	44	7040017	Exhaust Valve	1
02	0820025	Ring	1	45	0810064	Muffler Spring	1
03	7040008	Bevel Pinion	1	46	0990087	Silencer Plate	1
04	6560016	Key	1	47	7040015	Exhaust Cover	1
05	0860044	Ball Bearing	1	48	0800094	Spindle Washer	1
06	6580004	Cylinder Lower Plate	1	49	0880033	Cap Screw	1
07	7040006	Cylinder	1	50	7090002	Housing Cover	1
08	0840071	Spring Pin	1	51	0850107	"O"Ring	1
09	7040004	Rotor	1	52	7040007	Cup Nut	1
10	7040005	Rotor Blade	4	53	7080004	Throttle Valve Body	1
11	6580003	Cylinder Upper Plate	1	54	0850106	"O"Ring	1
12	0860026	Ball Bearing	1	55	7080008	Inlet Bushing	1
13	0800065	Bearing Cover	1	56	7080002	Throttle Valve Lever	1
14	6580011	Governor Cage	1	57	0840011	Spring Pin	1
15	0840120	Grooved Pin	2	58	0810066	Lock Spring	1
16	7040013	Governor Weight	2	59	0840087	Spring Pin	1
17	0810059	Governor Valve Spring	1	60	6110005	Lock Key	1
18	6580013	Governor Valve	1	61	0840139	Throttle Valve Rod	1
19	0800068	Adjusting Washer	1	62	0810070	Throttle Valve Spring	1
20	6580014	Governor Valve Spring Holder	1	63	0870015	Urethane Ball	1
21	0840121	Needle Roller	1	64	0850045	"O"Ring	1
22	7040014	Wheet Guard	1	65	7080006	Throttle Valve	1
23	0880052	Hexagon Bolt	1	66	0850108	"O"Ring	1
24	0800007	Spring Washer	1	67	0820026	Snap Ring	1
25	0790004	Nut	1	68	0800009	Washer	1
26	7040020	Wheel Flange	1	69	7030023	Wheel Flange	1
27	7040021	Wheel Flange	1	70	7030024	Wrench	1
28	7040022	Fixed Ring	1				
29	7040002	Spindle Bearing Washer	1				
30	0990088	Felt Ring	1				
31	0860011	Ball Bearing	1				
32	0800080	Bearing Washer	1				
33	0800073	Wheel Spindle Washer	2				
34	7040019	Wheel Spindle	1				
35	7040009	Bevel Gear	1				
36	0860001	Ball Bearing	1				
37	0800081	Bearing Holder	1				
38	7020020	Dead Handle	1				
39	0880061	Dead Handle Joint	1				
40	0800076	Conical Spring Washer	1				
41	7040016	Spacer	1				
42	0990086	Muffler Pad	2				
43	0850100	"O"Ring	1				

※We reserve the right to make changes to the designs of the parts without prior notice.

Air Tools and Pipe Fitting System



+	
1 Air tools	6 Air dryer
2 3/8" air compressor pipe	7 Air cylinder
3 Oil spray bottle	8 Air compressor
4 Pressure regulator	9 Automatic drainage unit
5 Air filter	10 Daily drainage unit

	<ol style="list-style-type: none"> 1. Always wear ANSI approved Z87.1 safety glasses with side shields. 2. For additional protection, use an approved head shield and goggles
	<ol style="list-style-type: none"> 1. Abrasive tools such as sanders and grinders, impact tools such as wrenches, which brings sparks during operating, and might lead to ignition on flammable materials. 2. The storage area of inflammable materials shall keep clean and well ventilated.
	<ol style="list-style-type: none"> 1. While working with tools, always wear MSHA/ NIOSH approved mask. 2. Working area remains clean and well ventilated.
	<ol style="list-style-type: none"> 1. Do not wear loose clothes, including leather belt and tie, etc. which might be hooked by tool parts. 2. Take off jewelry, watches, identifications, bracelets, necklaces, etc. which might be dragged by the tool.
	<ol style="list-style-type: none"> 1. keep the proper distance between tool and physical position including hands in order to avoid danger during processing.