

ATP

Air Tools Operation Manual

A206S

CE

Air Tools Operation Manual

1. The air pressure at the tool air inlet of Pneumatic Tools shall not exceed the maximum operating pressure 6.2bar-90psi.
2. The valve of air compressor shall be closed before being disconnected or disjointed, unless there is an automatic closing valve at the joint being separated.
3. A switching mechanism should be equipped at each tool station.
- 4 When tool is not being under used, air hoses and line should not connect to the tool and the air inlet shall be plugged.
5. Hose coupling shall be securely fitted to the tool and take off point. it is not allowed if an air hose and fitting are not exactly matched; Air Hose and fittings must be inspected regularly in case of damage or wear. Replace them when necessary.
6. Before the tool is connected to the air supply, check the throttle for proper operation (i.e., throttle moves freely and back to closed position.)
7. The operator shall be well instructed and illustrated the skills before managing air tools.
 - 7.1 Handle with care, paying careful attention to the weight of the tool.
 - 7.2 Keep hands and clothing away from the rotating parts of tools. In order to avoid any danger during operation, don't wear loose clothes or long hair , the long hair should be tied or covered by cap.
 - 7.3 Hold the tool correctly. Be alert to sudden changes during the operation of pneumatic Tools. Keep the balance and stability of physical position.
 - 7.4 The operator should wear protected goggles and earplugs; gloves, apron and helmet shall be used when necessary.
 - 7.5 Before repairing or changing the accessories, The air supply should be switched off, and the machine should be disconnected from the air supply
 - 7.6 Be nooticed that the tools are still running on for a while even after stopping operation. Do not put down the tool until the tool completely stops moving.
 - 7.7 Never use the air hose to support, raise or lower the tool. Fixed tool when working on elavated or high place.
 - 7.8 Air powered tools vibrate frequently under being working. The operation should be concentrated on working. Stop working while feel distracted or tired in case of any accicent.
8. While working processing on certain materials might cuase toxic dust, the operator should wear and use protective device.
9. Regularly check the anvil shank speed by tachometer at pressure 0.6Mpa, to ensure the speed is under its free speed range.
10. Make sure that tool is securely fixed If the tool is fasten uopn balancer or a similar device.
11. When air supply interrupted, check if the throttle trigger is back to stop position.
12. Be sure that the air scource is inflammable or inexplosive.
13. The air tool is NOT nonconductor.

1. Manual Instruction

- 1.1. Please review the manual instruction before operating the tool, make sure the security on working.
- 1.2. In order to protect air tools,we strongly suggest to install a Air Preparation Unit (Air filter, air regulator, air lubricator) on aircompressor.
- 1.3. Please notice if the over moisture, and daily exhuaust water from the air compressor.
- 1.4. Be sure to fill in spindle oil into the air inlet before using air tools.
- 1.5. Please keep proper air pressure while using air tool.
- 1.6. Do not apply too viscid oil to air inlet, otherwise it will reduce the air motor power.

2.Maintenance

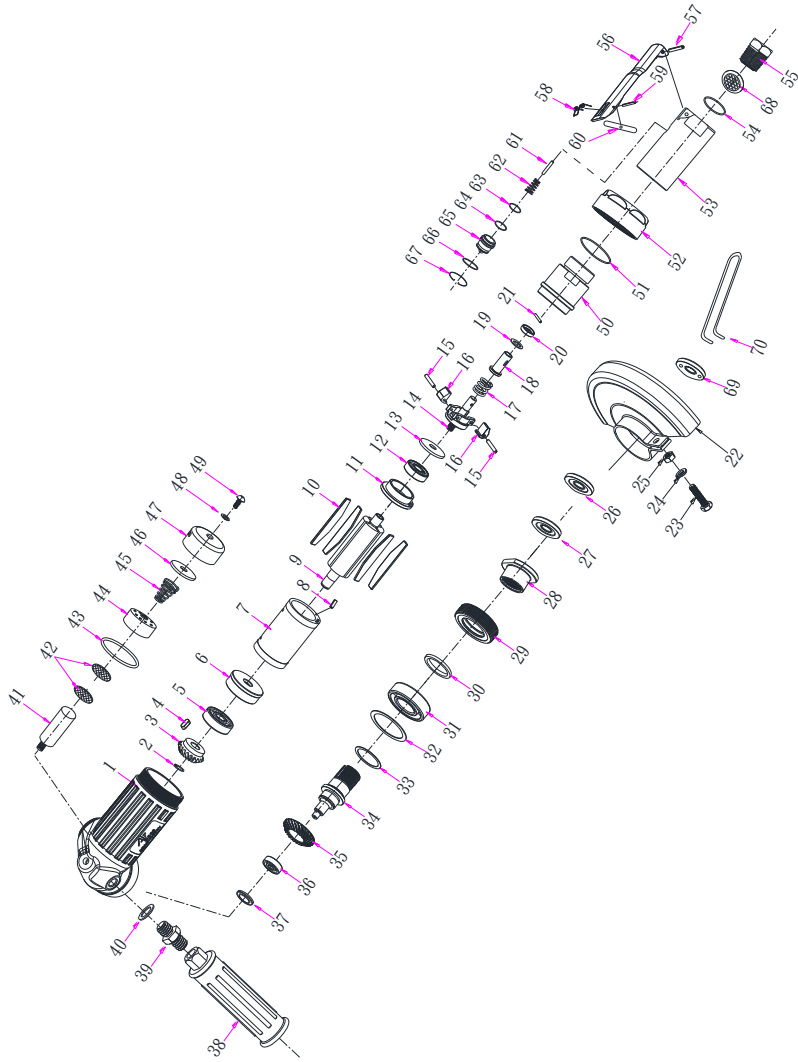
- 2.1. The air source supplying to the tool, that should have been processed, and ensure the air is clean and dried.
- 2.2. Please use the lubricator to lubricate tools, set influx volume to two drops per minute; if do not use the lubricator, it will need to pour three or fourth drops through the joint of air hose, by hand every day. Air Boss professional lubricant oil is recommended. After droping oil, remain the tool idling; while oil entirely lubricate tool, it will also remove some impurities along with exhusted oil .

3.Special Explanation

- 3.1. Within three months from the shipment date, if the tool can't move, air leaking, or the torque related issues. etc, which we authenticate that it is cuased by our side during manufacturing, Air Boss will be responsible to provide free maintenance. However, any of the following conditions is not covered under our responsibility, such as improper maintenance, incorrect operation without according to standard operation method, over supply from air compressor, overloaded working on tools or the other artificial damages...etc. the concrete conclusion is subject to our final confirmation after checking damaged parts.
- 3.2. Above maintenance policies are subject to change without prior notice.

**AIR ANGLE GRINDER
A206S**

Exploded View



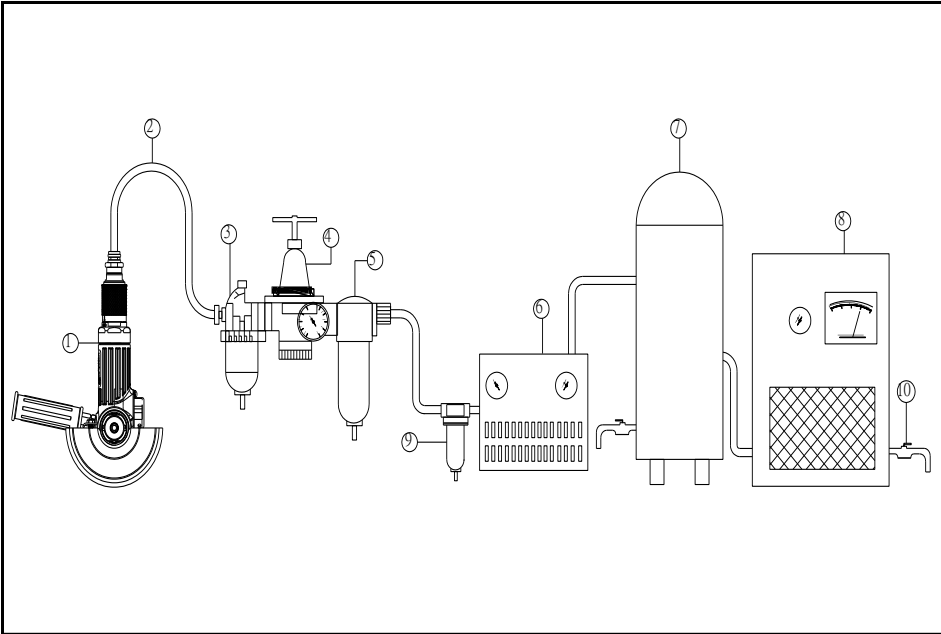
Parts List

NO.3

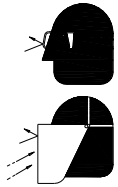

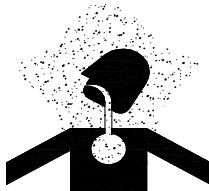

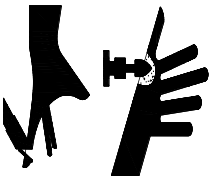
| Index No. | Parts No. | Description | No. Req'd | Index No. | Parts No. | Description | No. Req'd |
|-----------|-----------|------------------------------|-----------|-----------|-----------|-----------------------|-----------|
| 01 | 7040001 | Housing | 1 | 44 | 7040017 | Exhaust Valve | 1 |
| 02 | 0820025 | Ring | 1 | 45 | 0810064 | Muffler Spring | 1 |
| 03 | 7040008 | Bevel Pinion | 1 | 46 | 0990087 | Silencer Plate | 1 |
| 04 | 6560016 | Key | 1 | 47 | 7040015 | Exhaust Cover | 1 |
| 05 | 0860044 | Ball Bearing | 1 | 48 | 0800094 | Spindle Washer | 1 |
| 06 | 6580004 | Cylinder Lower Plate | 1 | 49 | 0880033 | Cap Screw | 1 |
| 07 | 7040006 | Cylinder | 1 | 50 | 7090002 | Housing Cover | 1 |
| 08 | 0840071 | Spring Pin | 1 | 51 | 0850107 | "O"Ring | 1 |
| 09 | 7040004 | Rotor | 1 | 52 | 7040007 | Cup Nut | 1 |
| 10 | 7040005 | Rotor Blade | 4 | 53 | 7080004 | Throttle Valve Body | 1 |
| 11 | 6580003 | Cylinder Upper Plate | 1 | 54 | 0850106 | "O"Ring | 1 |
| 12 | 0860026 | Ball Bearing | 1 | 55 | 7080008 | Inlet Bushing | 1 |
| 13 | 0800065 | Bearing Cover | 1 | 56 | 7080002 | Throttle Valve Lever | 1 |
| 14 | 6580011 | Governor Cage | 1 | 57 | 0840011 | Spring Pin | 1 |
| 15 | 0840120 | Grooved Pin | 2 | 58 | 0810066 | Lock Spring | 1 |
| 16 | 7040013 | Governor Weight | 2 | 59 | 0840087 | Spring Pin | 1 |
| 17 | 0810059 | Governor Valve Spring | 1 | 60 | 6110005 | Lock Key | 1 |
| 18 | 6580013 | Governor Valve | 1 | 61 | 0840139 | Throttle Valve Rod | 1 |
| 19 | 0800068 | Adjusting Washer | 1 | 62 | 0810070 | Throttle Valve Spring | 1 |
| 20 | 6580014 | Governor Valve Spring Holder | 1 | 63 | 0870015 | Urethane Ball | 1 |
| 21 | 0840121 | Needle Roller | 1 | 64 | 0850045 | "O"Ring | 1 |
| 22 | 7040014 | Wheet Guard | 1 | 65 | 7080006 | Throttle Valve | 1 |
| 23 | 0880052 | Hexagon Bolt | 1 | 66 | 0850108 | "O"Ring | 1 |
| 24 | 0800007 | Spring Washer | 1 | 67 | 0820026 | Snap Ring | 1 |
| 25 | 0790004 | Nut | 1 | 68 | 0800009 | Washer | 1 |
| 26 | 7040020 | Wheel Flange | 1 | 69 | 7030023 | Wheel Flange | 1 |
| 27 | 7040021 | Wheel Flange | 1 | 70 | 7030024 | Wrench | 1 |
| 28 | 7040022 | Fixed Ring | 1 | | | | |
| 29 | 7040002 | Spindle Bearing Washer | 1 | | | | |
| 30 | 0990088 | Felt Ring | 1 | | | | |
| 31 | 0860011 | Ball Bearing | 1 | | | | |
| 32 | 0800080 | Bearing Washer | 1 | | | | |
| 33 | 0800073 | Wheel Spindle Washer | 2 | | | | |
| 34 | 7040019 | Wheel Spindle | 1 | | | | |
| 35 | 7040009 | Bevel Gear | 1 | | | | |
| 36 | 0860001 | Ball Bearing | 1 | | | | |
| 37 | 0800081 | Bearing Holder | 1 | | | | |
| 38 | 7020020 | Dead Handle | 1 | | | | |
| 39 | 0880061 | Dead Handle Joint | 1 | | | | |
| 40 | 0800076 | Conical Spring Washer | 1 | | | | |
| 41 | 7040016 | Spacer | 1 | | | | |
| 42 | 0990086 | Muffler Pad | 2 | | | | |
| 43 | 0850100 | "O"Ring | 1 | | | | |

※We reserve the right to make changes to the designs of the parts without prior notice.

Air Tools and Pipe Fitting System



| | |
|----------------------------|---------------------------|
| + | |
| 1 Air tools | 6 Air dryer |
| 2 3/8" air compressor pipe | 7 Air cylinder |
| 3 Oil spray bottle | 8 Air compressor |
| 4 Pressure regulator | 9 Automatic drainage unit |
| 5 Air filter | 10 Daily drainage unit |

| | |
|---------------------------------------------------------------------------------------|-----------------------------------------------------------------------------------------------------------------------------------------------------------------------------------------------------------------------------------------------------------------------------------------------------------------------|
|  | <ol style="list-style-type: none"> 1. Always wear ANSI approved Z87.1 safety glasses with side shields. 2. For additional protection, use an approved head shield and goggles |
|  | <ol style="list-style-type: none"> 1. Abrasive tools such as sanders and grinders, impact tools such as wrenches, which brings sparks during operating, and might lead to ignition on flammable materials. 2. The storage area of inflammable materials shall keep clean and well ventilated. |
|  | <ol style="list-style-type: none"> 1. While working with tools, always wear MSHA/ NIOSH approved mask. 2. Working area remains clean and well ventilated. |
|  | <ol style="list-style-type: none"> 1. Do not wear loose clothes, including leather belt and tie, etc. which might be hooked by tool parts. 2. Take off jewelry, watches, identifications, bracelets, necklaces, etc. which might be dragged by the tool. |
|  | <ol style="list-style-type: none"> 1. keep the proper distance between tool and physical position including hands in order to avoid danger during processing. |