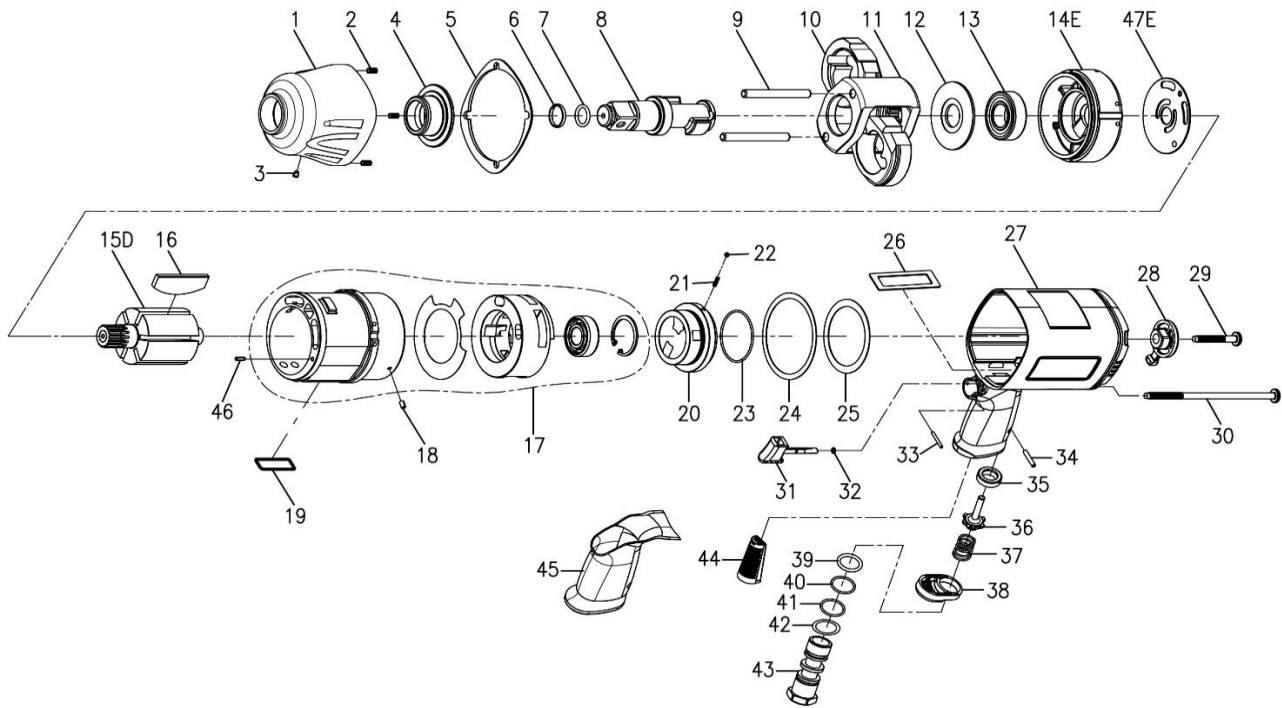


ATP7522PT

3/4" PROFESSIONAL AIR IMPACT WRENCH



Index No.	Part No.	Description	Q'ty	F.O.B		Index No.	Part No.	Description	Q'ty	F.O.B	
				Unit Price	USD					Unit Price	USD
1	272B-002	Hammer Case	1	12.1		23	00-4179	O-Ring	1	0.2	
2	00-4306	Inserts Recoil	4	0.3		24	278F-030	Rear Gasket	1	0.2	
3	00-4603	Grease Fitting	1	0.5		25	278F-031	Washer	1	0.7	
4	278F-010	Anvil Bushing	1	4.7		26	278F-019	Air Channel Gasket	1	0.2	
5	278F-020	Front Gasket	1	0.4		27	272B-001	Motor Housing	1	21.6	
6	280-028	Anvil Collar	1	0.2		28	278V-022	Regulator Knob	1	0.8	
7	00-4122	O-Ring	1	0.2		29	00-6202	Cap Screw	1	0.2	
8	278D-011A6	Anvil	1	31.1		30	278F-028	Screw	4	0.5	
	278D-011B6	6" Anvil	1	47.2		31	305H-024	Trigger	1	0.6	
9	285C-016	Hammer Pin	2	1.2		32	00-4101	O-Ring	1	0.2	
10	272B-017	Hammer	2	14.7		33	00-3335	Spring Pin	1	0.2	
11	272B-012	Hammer Cage	1	25.0		34	00-3308	Spring Pin	1	0.2	
12	278-019-B	Rear Washer	1	0.8		35	306-027-B	Bushing	1	0.7	
13	00-2325	Ball Bearing	1	3.4		36	306-026	Valve Stem	1	0.7	
14E	278F-005B	Front End Plate	1	7.5		37	278H-026	Spring	1	0.2	
15D	278F-007B	Rotor	1	13.4		38	305-021	Exhaust Deflector	1	0.5	
16	278H-008D	Rotor Blade	6	1.1		39	00-4126	O-Ring	1	0.2	
17	278F-006B	Cylinder	1	45.4		40	00-4143	O-Ring	1	0.2	
	278F-033	Valve Sleeve Gasket	1		41	00-4173	O-Ring	1	0.2		
	278F-029	Valve Sleeve	1		42	305F-032	Washer	1	0.6		
	00-2304	Ball Bearing	1		43	278J-025A	Air Inlet(3/8" PF-19)	1	5.2		
	00-3111	Snap Ring	1			278J-025B	Air Inlet(3/8" PT-19)	1			
18	00-3355	Spring Pin	1	0.2		278J-025C	Air Inlet(3/8" NPT-18)	1			
19	278F-041	Square Ring	1	0.2		44	305F-042	Muffler	1	0.5	
20	278J-021	Reverse Valve	1	4.2		45	272B-036	Handle Rubber	1	2.8	
21	305F-034B	Spring	1	0.2		46	00-3435	Pin	1	0.2	
22	00-3805	Steel Ball	1	0.2		47E	W278V-019	Fornt End Washer	1	2.1	