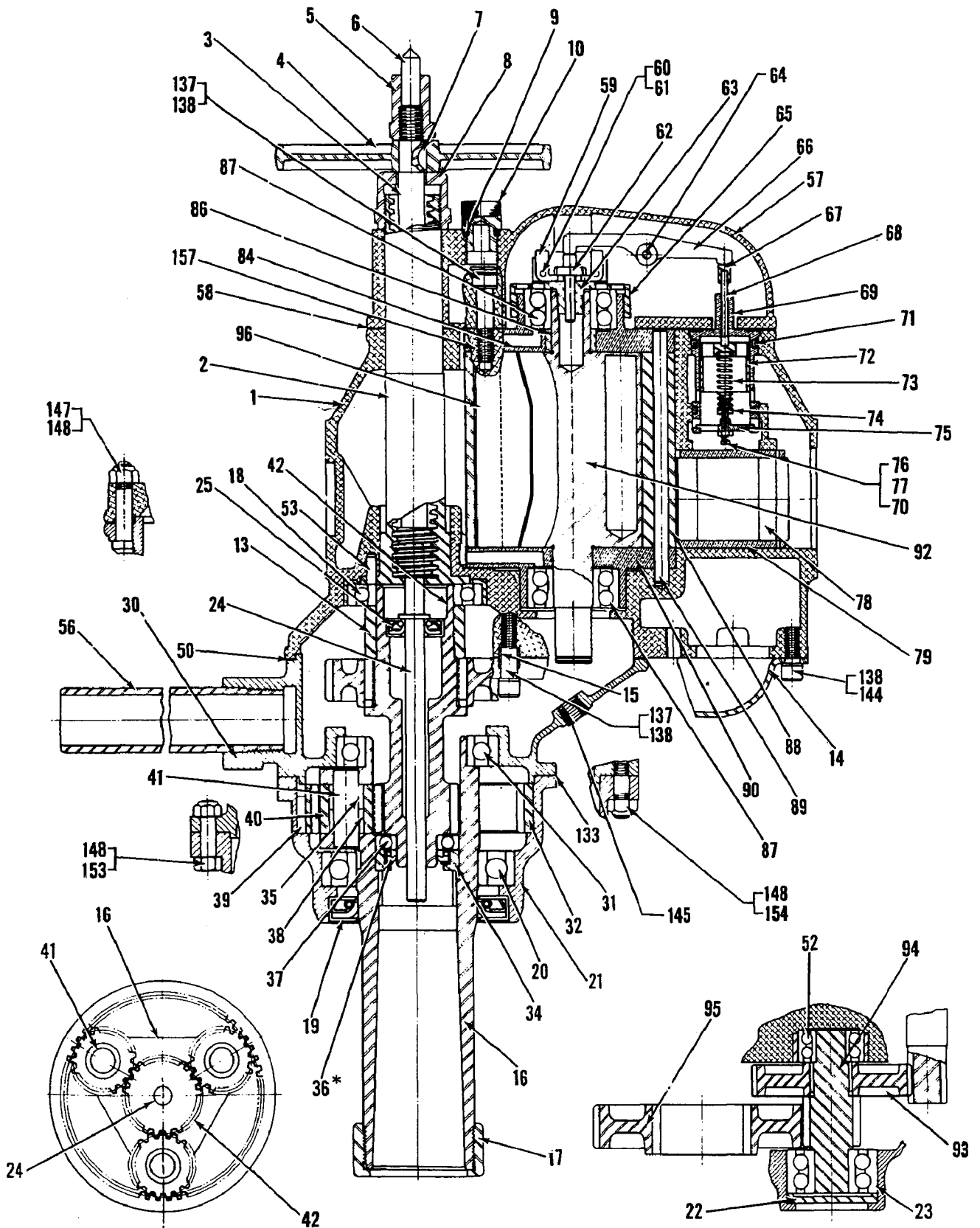


ATP 3500 ROTARY DRILL

60 & 100 RPM



All Threads Are Right Hand Unless Otherwise Specified.

ATP 3500 ROTARY DRILL

60 & 100 RPM

Index No.	Part No.	Description	No. Req'd.	Index No.	Part No.	Description	No. Req'd.
1	C-086161	Housing- Motor (Incl: Index No's. 79 & 157)	1	66	C-086172	Lever-Governor	1
2	C-086182	Post-Feed	1	67	C-089781	Cap-Valve Pin	1
3	C-086186	Screw-Feed	1	68	C-086174	Pin-Governor Valve	1
4	C-076488	Handle-Feed Screw	1	69	C-086175	Cage-Governor	1
5	C-076487	Cap-Feed Screw	1	70	C-091035	Lockwasher (#5)	1
6	C-069911	Center-Feed Screw	1	71	C-085385	"O" Ring (-216)	2
7	S-006920	Key-Woodruff (#3)	1	72	C-090864	Valve-Governor	1
8	C-076493	Nut-Feed Post	1	73	C-089834	Spring-Governor	1
9	P-083082	"O" Ring (-112)	1	74	C-089833	Button-Spring Guide	1
10	C-086130	Plug-Oil Filler	1	75	C-089835	Retainer-Spring	1
13	C-086257	Spacer-Gear	1	76	C-089836	Screw-Fillister Head (#5-40 x 7/8")	1
14	C-086211	Deflector	1	77	C-068684	Nut-Hex. (#5-40)	1
15	S-021053	Tube-Dowel	1	78	C-086176	Valve-Reverse	1
16	C-086247	Spindle (#5 Morse Taper)	1	79	C-090295	Bushing-Reverse Valve (Unreamed) (Use Std. 1 11/16" Reamer)	1
	C-086261	Spindle (#4 Morse Taper)	1				
17	C-090099	Nut-Protection	1	84	C-086167	Plate-Upper End	1
18	C-078215	Bearing-Ball	1	86	C-078923	Spacer-Rotor Bearing	1
19	C-086772	Seal-Oil	1	87	C-087589	Bearing-Ball	2
20	C-086255	Bearing-Ball	1	88	C-086170	Liner	1
21	C-086246	Case-Gear	1	89	C-086179	Dowel-Liner	1
22	S-015682	Plug-Bearing	1	90	C-086168	Plate-Lower End	1
23	S-064925	Bearing-Ball	1	92	C-086169	Rotor (9 Teeth)	1
24	C-086258	Pin-Extractor	1	93	C-086188	Gear-1st. Int. (52 Teeth)	1
25	C-086259	Seal-Grease	1	94	C-086193	Pinion (14 Teeth) (60 RPM)	1
30	C-086245	Plate-Transfer	1		C-086199	Pinion (22 Teeth) (100 RPM)	
31	S-079566	Bearing-Ball	1	95	C-086194	Gear-Spindle (42 Teeth) (60 RPM)	1
32	C-086250	Gear-Ring (48 Teeth)	1		C-086200	Gear-Spindle (39 Teeth) (100 RPM)	
34	C-086252	Cage-Oil Seal	1	96	C-079893	Blade-Rotor	6
35	C-095065	Sleeve-Needle Bearing	3	133	C-089946	Gasket-Gear Case	1
36	C-086254	Seal-Oil	1	137	S-062778	Screw-Allen Cap (5/16"-18 x 1 1/2")	7
37	C-0867373	Bearing-Ball	1				
38	C-095030	Bearing-Needle	6	138	C-011070	Lockwasher (5/16")	10
39	C-018672	Key-Ring Gear	1	144	S-062776	Screw-Allen Cap (5/16"-18 x 3/4")	3
40	C-095064	Pinion (15 Teeth)	3				
41	C-086251	Shaft-Pinion	3	145	C-068799	Plug-Pipe	1
42	C-086248	Spindle-Geared (18 Teeth)	1				
50	C-086187	Gasket-Transfer Plate	1	147	C-037937	Bolt (5/16"-24 x 1 5/8")	2
52	S-068849	Bearing-Ball	1	148	S-013073	Nut-Fiber Insert (5/16"x24)	8
53	S-013563	Pin-Feed Post	1	153	C-036530	Screw-Hex. Head Cap (5/16"-24 x 1 1/4")	5
56	S-000151	Handle-Dead	1	154	C-090266	Stud (5/16"-18 x 5/16-24 x 1 1/8")	1
57	C-089744	Cover-Housing	1	157	C-090168	Insert-Heli-Coil	4
58	C-086180	Gasket-Housing Cover	1				
59	C-082435	Weight-Governor	2				
60	C-083360	Retainer-Governor Pin	1				
61	C-083361	Pin-Governor Weight	2				
62	C-086171	Pin-Governor Push	1				
63	C-085364	Body-Governor	1				
64	C-086173	Pin-Governor Lever	1				
65	C-082201	Nut-Bearing Clamp	1				