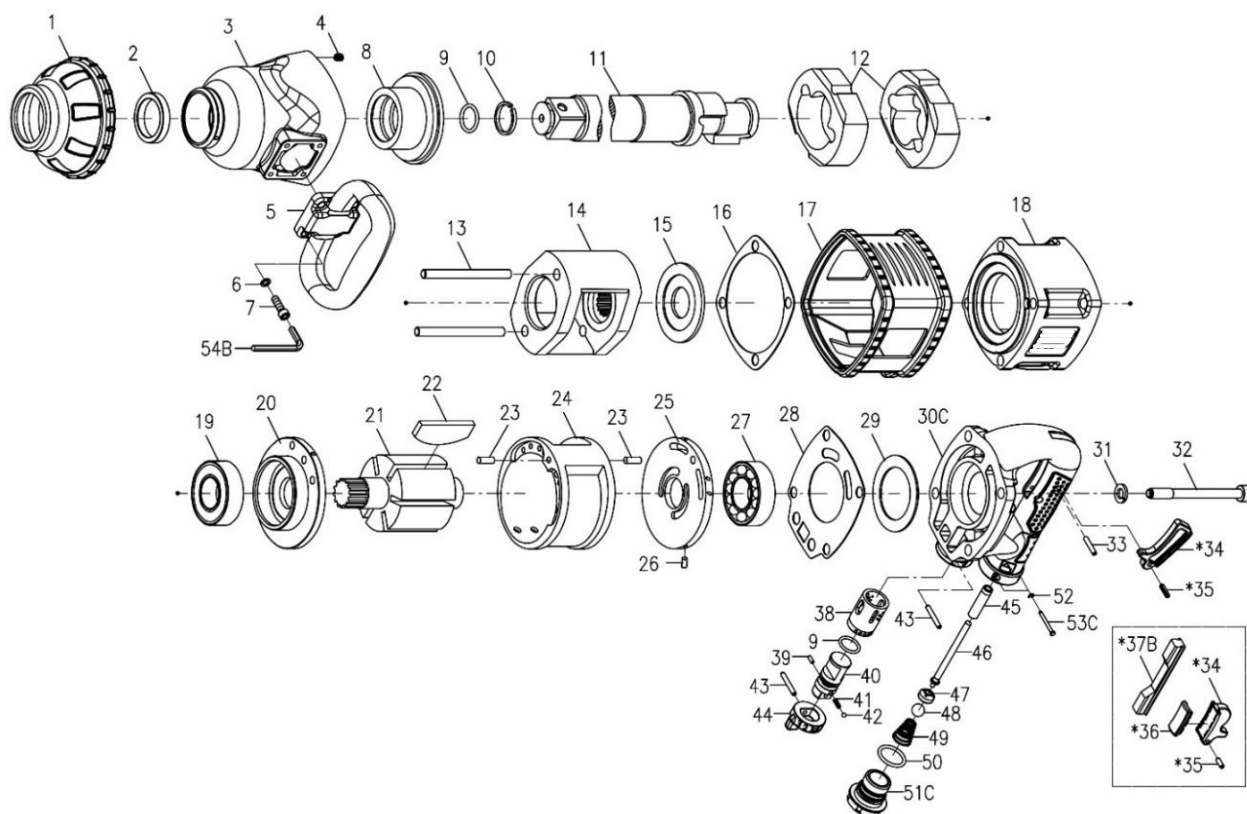


ATP1038EI-TH

1" PROFESSIONAL AIR IMPACT WRENCH



Index No.	Part No.	Description	Q'ty	F.O.B		Index No.	Part No.	Description	Q'ty	F.O.B		
				Unit Price	USD					Unit Price	USD	
1	315PX-040	Hammer Case Rubber	1	1.8		30C	315PX-004-B	Handle Frame	1	33.0		
2	00-4218	Oil Seal	1	0.8		31	00-1810	Spring Washer	4	0.2		
3	315PX-002	Hammer Case	1	20.5		32	00-0157	Cap Screw	4	1.1		
4	00-4315	Incerts Recoil	4	0.4		33	00-3305	Spring Pin	1	0.2		
5	315F-020	D-Type Handle	1	9.4		*34	315S-024	Inner Trigger	1	0.7		
6	00-1803	Spring Washer	4	0.2		*35	00-3320	Spring Pin	1	0.2		
7	00-0119	Cap Screw	4	0.2		*36	315S-025	Trigger Rubber	1	1.1		
8	315-010-B	Anvil Bushing	1	9.5		*37B	315F-039	Rubber Protector	1	0.5		
9	00-4124	O-Ring	2	0.2		*34	315S-023	Outer Trigger	1	0.7		
10	310-038	Anvil Collar	1	0.2		*35	00-3320	Spring Pin	1	0.2		
11	315G-011A8	2" Anvil	1	53.2		38	328-020	Reverse Valve Bushing	1	7.3		
	315G-011B8	8" Anvil		89.6		39	00-3307	Spring Pin	1	0.2		
12	315-SR-017	Hammer	2	16.2		40	315S-021	Reverse Valve	1	6.1		
13	315-016	Hammer Pin	2	1.4		41	322-023-B	Spring	1	0.2		
14	315G-012	Hammer Cage	1	40.3		42	00-3802	Steel Ball	1	0.2		
15	328-019	Rear Washer	1	1.1		43	00-3338	Spring Pin	2	0.2		
16	315PX-030	Front Gasket	1	2.4		44	315S-022	Reverse Knob	1	1.0		
17	315PX-043	Housing Band	1	2.1		45	315S-026	Valve Bushing	1	1.6		
18	315PX-001	Motor Housing	1	22.3		46	315S-027	Valve Stem (Inner)	1	1.6		
19	00-2301	Ball Bearing	1	5.1		47	568-026	Bushing	1	2.4		
20	315-005C	Front End Plate	1	16.1		48	00-3809	Steel Ball	1	0.5		
21	315PX-007	Rotor	1	21.0		49	315S-029	Spring	1	0.3		
22	328-008	Rotor Blade	6	1.4		50	00-4188	O-Ring	1	0.2		
23	00-3311	Spring Pin	2	0.2		51C	315F-025A-B	Air Inlet (1/2" PF)	1			
24	315PX-006	Cylinder	1	17.9			315F-025B-B	Air Inlet (1/2" PT)		5.5		
25	315-009C	Rear End Plate	1	17.0			315F-025C-B	Air Inlet (1/2" NPT)				
26	00-3314	Spring Pin	1	0.2		52	00-3207	Snap Ring	2	0.2		
27	00-2319	Ball Bearing	1	3.4		53C	315S-034-B	Pin	2	0.7		
28	315PX-032	Rear Gasket	1	2.3		54B	00-3906	Hex. Wrench	1	0.2		
29	550-042	Gasket	1	0.3								